

HAYMAN REESE
PART No: **R2628**
JAYCO MOTORHOME TOWBAR

INSTALLATION INSTRUCTIONS

PLEASE ENSURE THAT INSTRUCTIONS ARE UNDERSTOOD PRIOR TO FITMENT



Installation Time: Approx 45 Mins

Towbar Installation Instructions
JAYCO MOTORHOME

Towbar capacity

Part Number R2628

Max Towing Braked 2000kg
Max Static Ball Load 200kg

Hayman Reese (Cequent)
PO Box 4050, Dandenong South VIC 3164
Phone 1800 812 017 Email info@haymanreese.com.au

HAYMAN REESE

PART No: R2628

JAYCO MOTORHOME TOWBAR

INSTALLATION INSTRUCTIONS

PLEASE ENSURE THAT INSTRUCTIONS UNDERSTOOD PRIOR TO FITMENT

Warning:

1. Do not, drill, cut, weld or otherwise modify the towbar.
2. If you are using electric welding on a motor vehicle, **always** check that the vehicle is not equipped with electronic engine or instrument management equipment. Failure to do so could **destroy** any onboard computers. If in doubt, check with the vehicle's manufacturer.
1. **General:** Ensure all hardware items have been included refer to assembly diagram.
2. It is recommended that the instructions are read through and completely understood before making any attempt to fit this product.
3. Be wary of any changes to vehicle designs or other accessories that may conflict with the installation of this product.
4. Before drilling ensure that the area is clear of fuel, electrical & other components.
5. All holes drilled into the body panels shall have all burrs & swarf removed then coated with a suitable rust preventative paint.
6. The high tensile fasteners supplied with this product were used to achieve the specified rating. If replacement is required ensure that fasteners of the same rating & quality are used. Contact an authorised **Hayman Reese** dealer if further information is required.
7. Ensure that all hardware is fastened to torque list below check fasteners on regular basis.
8. Towbar load rating sticker provided with this product shall be conspicuously located on inside rear end of the driver's door. **(See diagram below).**
9. Hayman Reese recommends that you check your tow ball to ensure that it complies with the Australian standards **AS 4177.2**.
10. **PLEASE NOTE:** It is advised to remove your lug or tbn when not actually towing so as to produce a clear view of the vehicles registration plate if obscured, and to also provide maximum available departure angle.

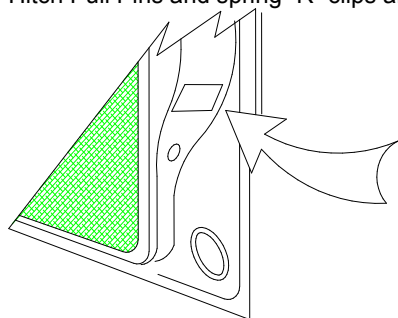
Tow bar Maintenance and Care.

Hayman Reese recommends that bolt torque's, as listed below, are routinely and regularly inspected and checked for correct tension. Replace any worn or defective parts.

We recommended to remove Tow Ball Mounts (TBM's, tongues or lugs) when not being used for any considerable length of time.

So as to avoid injury, when not towing it is suggested that the tongue, Pull Pin and R-clip are removed then stored in a safe, clean and dry place, away from excessive moisture.

Hitch Pull Pins and spring "R" clips are regularly checked for proper installation. Replace any worn or defective parts.



Place load rating sticker
inside driver's door here

RECOMMENDED ASSEMBLY TORQUE LISTING

Diameter Grade 8.8 Bolt

M6	9.5 Nm
M8	21.7 Nm
M10	43.4 Nm
M12	77.3 Nm
M14	146 Nm
M16	189.8 Nm

FOR TOWING PURPOSES ONLY

For towing capacity details please refer to vehicle owner's manual or to the manufacturer. Overloading can void your warranties.

Issue Date 28/08/09

Page 2

Part No: R2628

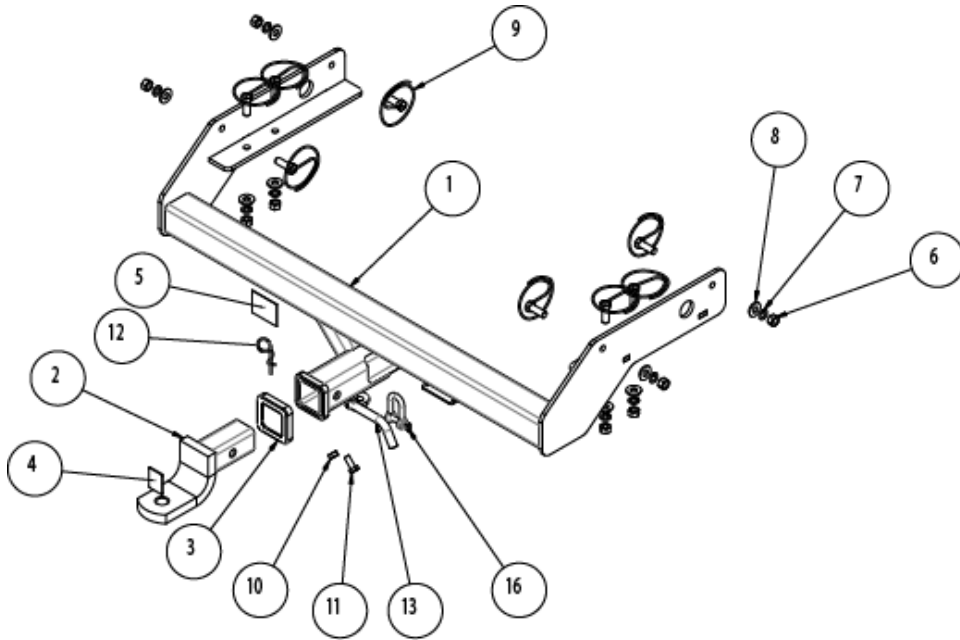
HAYMAN REESE

PART No: R2628

JAYCO MOTORHOME TOWBAR

INSTALLATION INSTRUCTIONS

PLEASE ENSURE THAT INSTRUCTIONS UNDERSTOOD PRIOR TO FITMENT



Items 14, 15 and 17 are not shown in the drawing

Figure 1 – Layout Diagram

ITEM NO.	DESCRIPTION	QTY.
1	WELD ASSY JAYCO M-HOME	1
2	TBM	1
3	Hitch Box Collar Cover	1
4	HAYMAN REESE LOGO STICKER	1
5	CP	1
6	M12-1.75 Z/P HX NUTS	8
7	M12 X 4.0 X 2.5 SPRING WASHER	8
8	WASHER M12x28.8x3mm	8
9	M12 X 35 X 400 WIRE ASSEMBLY	8
10	NUT HX M10 - 1.5 Z/P	1
11	BOLT M10-1.50 x 25	1
12	SPRING COTTER PIN	1
13	PULL PIN	1
14	Warranty Card	1
15	FITTING INSTRUCTIONS	1
16	D' SHACKLE	2
17	LRL	1

HAYMAN REESE

PART No: R2628

JAYCO MOTORHOME TOWBAR

INSTALLATION INSTRUCTIONS

PLEASE ENSURE THAT INSTRUCTIONS UNDERSTOOD PRIOR TO FITMENT

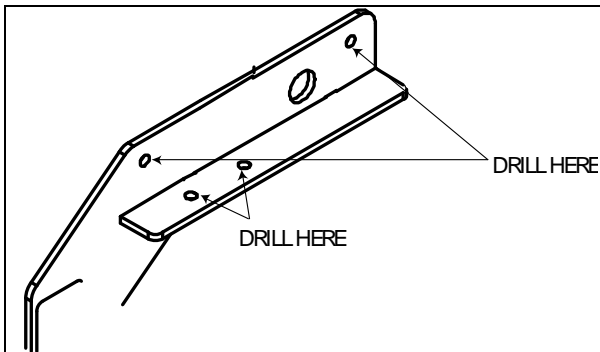


Figure 2 – Drill holes on the chassis rail.

1. Locate the towbar on the chassis rail and drill holes 12.5mm x 2 each, on the vertical and horizontal face of the chassis. Refer to Figure 2.

Note: Make sure that the big hole for spare wheel winder on the chassis rail aligns with the hole on the side arm.

2. Use the bolt and wire assembly (item 10) for the three rear-most holes and longer wire assembly (item 9) for the forward-most holes in the chassis rail. Refer to Figure 1 on page 3.

3. Torque the bolts, to the mentioned torque on page 2.
4. Affix the load rating label, as shown on page 2.